

# VISULAS YAG III Combi. Intelligent versatility.



# The safe, compact way to combine retinal, cataract and glaucoma therapy.



## Design + Flexibility = Office Convenience

VISULAS YAG III Combi is a big performer with a small footprint. Both laser systems can be placed safely and neatly under the instrument table, providing the user with more space and room for maneuver. The system's versatility is an added benefit. One example: While the VISULAS 532s is being used in the OR, the VISULAS YAG III can continue to be used independently. Both laser systems can be used as separate systems at any time.

During therapy, the vertically adjustable IT 4L laser table provides outstanding comfort for all patients, regardless of their size. Easy wheelchair access is guaranteed.

## Simplicity + Intuition = Ease of Use

Both laser systems are reliably and safely controlled from a central console. Intuitive, language-independent user guidance facilitates the physician's work. Warnings and system information appear in clear text. The white on blue display is easily legible in a darkened room, allowing users with prescriptions of +/- 2.25 D to work without their glasses.

## 1 + 1 = 3

Add a photocoagulation laser to a disruption laser and what do you get? VISULAS YAG III Combi. The new, compact laser slit lamp from Carl Zeiss Meditec combines the benefits of the two systems and offers a spectrum of applications covering three areas of therapy.

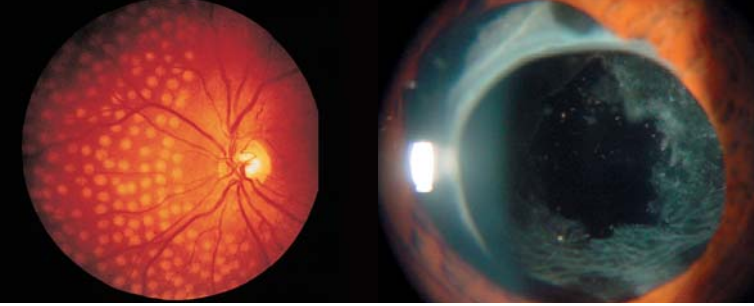
VISULAS YAG III Combi is the optimum system not only for photocoagulation and post-cataract treatments, but also for such established glaucoma therapies as laser trabeculoplasty<sup>1</sup> and combined iridotomy<sup>2</sup>. The push of a button is all you need to switch between the two laser systems.

VISULAS YAG III Combi is a three-in-one configuration: three therapies, one investment.



<sup>1</sup> Beckman H. et al; *The Glaucoma Laser Trial (GLT)-2, Results of Argon Laser Trabeculoplasty versus Topical Medicines*; *Ophthalmology* Nov 1990; 97, 1403-1413

<sup>2</sup> Lim L, Seah SK, Lim AS; *Comparison of argon laser iridotomy and sequential argon laser and Nd:YAG laser iridotomy in dark irises*; *Ophthalmic Surg Lasers* Apr 1996; 27(4), 285-288



## Competence + Innovation = Technical Excellence

VISULAS YAG III Combi was specially developed to provide maximum safety and minimum fatigue. The optimized system for two laser sources features top-quality slit lamp optics from Carl Zeiss Meditec with the following superb benefits:

- The correct, highly transparent physician's safety filter is always active for all applications.
- The coaxial illumination and the servo-electric micromanipulator ensure that the coagulation laser is always visible in the center of the illuminated area to be treated.
- The parfocal system always images the laser spot sharply on the target area, ensuring homogenous, reproducible laser burns.
- The 4-point aiming beam and variable focus shift guarantee maximum precision in YAG laser therapy.
- Symmetrical arrangement of the instrument controls ensures ergonomic access to all slit lamp functions.

Needless to say, VISULAS YAG III Combi can also be used with our extensive range of proven accessories, e.g.

- Laser indirect ophthalmoscope
- Endo-probes
- DigCam adapter
- Coobservation tube and documentation devices



# Technical data.

## VISULAS 532s Photocoagulation Laser

Laser wavelength	532 nm (solid state laser)
Laser power	1.5 W at cornea
Aiming beam	Diode, 635 nm, max. 1 mW
Pulse duration	10 - 2500 ms (cw)
Pulse interval	100 - 6000 ms
Laser spot size	50 - 1000 µm, continuously adjustable, parfocal
Power requirements	100 - 240 V, 50/60 Hz, max. 400 W
Dimensions (h x w x d)	151 x 289 x 400 mm / 5.9 x 11.4 x 15.7 inches

## VISULAS YAG III Photodisruption Laser

Laser wavelength	1064 nm
Mode	Super-Gaussian
Optical breakdown	typically 2.5 mJ in air
Max. laser energy	Single pulse: typ. 10 mJ, Double pulse: typ. 23 mJ, Triple pulse: typ. 35 mJ
Aiming beam	Diode approx. 670 nm, 4-spot aiming beam
Focus shift	Variable: +150 µm; 0; -150 µm
Pulse repetition rate	Max. 2.5 Hz
Focus diameter	10 µm in air
Power requirements	100 - 240 V, +/- 10%, 50 - 60 Hz, max. 1.4 - 0.7 A, short-time max. 2.2 A (< 1.sec.)
Dimensions (h x w x d)	135 x 210 x 330 mm / 5.3 x 8.3 x 13 inches

## LSL 532s Combi Laser Slit Lamp

Illumination	12 V, 30 W halogen lamp, adjustable
Magnifications	5 / 8 / 12 / 20 / 32x
Slit adjustment	Slit height: 1 / 3 / 5 / 9 / 14 mm, in steps Slit width: 0 - 14 mm, continuous
Dimensions (h x w x d)	623 x 400 x 350 mm / 24.5 x 15.7 x 13.8 inches



When your patients entrust you with their eyesight, their vision and your expertise converge. For the world's most advanced surgical and diagnostic solutions in ophthalmology, you can turn to Carl Zeiss Meditec. We're committed to earning your trust anew, every day.

**Publication No.: 000000-1315-843**  
 Subject to change in design and scope of delivery and as a result of ongoing technical development.  
 Printed in Germany, w.a.l 07/04. Printed on environmentally-friendly, unbleached paper.



**Carl Zeiss Meditec AG**  
 Goeschwitzer Str. 51-52  
 07745 Jena  
 Germany

Phone: +49 (0) 36 41 / 22 0-3 33  
 Fax: +49 (0) 36 41 / 22 0-2 82  
 info@meditec.zeiss.com  
 www.meditec.zeiss.com

**Carl Zeiss Meditec Inc.**  
 5160 Hacienda Drive  
 Dublin, CA 94568  
 USA

Toll Free: (800) 342-9821  
 Phone: +1 (925) 557-4651  
 Fax: +1 (925) 557-4217  
 info@meditec.zeiss.com  
 www.meditec.zeiss.com